

# TECHNICAL RIDER resumed (outdoors or indoor)

More about technical rider by request [compagnie.zai@gmail.com](mailto:compagnie.zai@gmail.com)



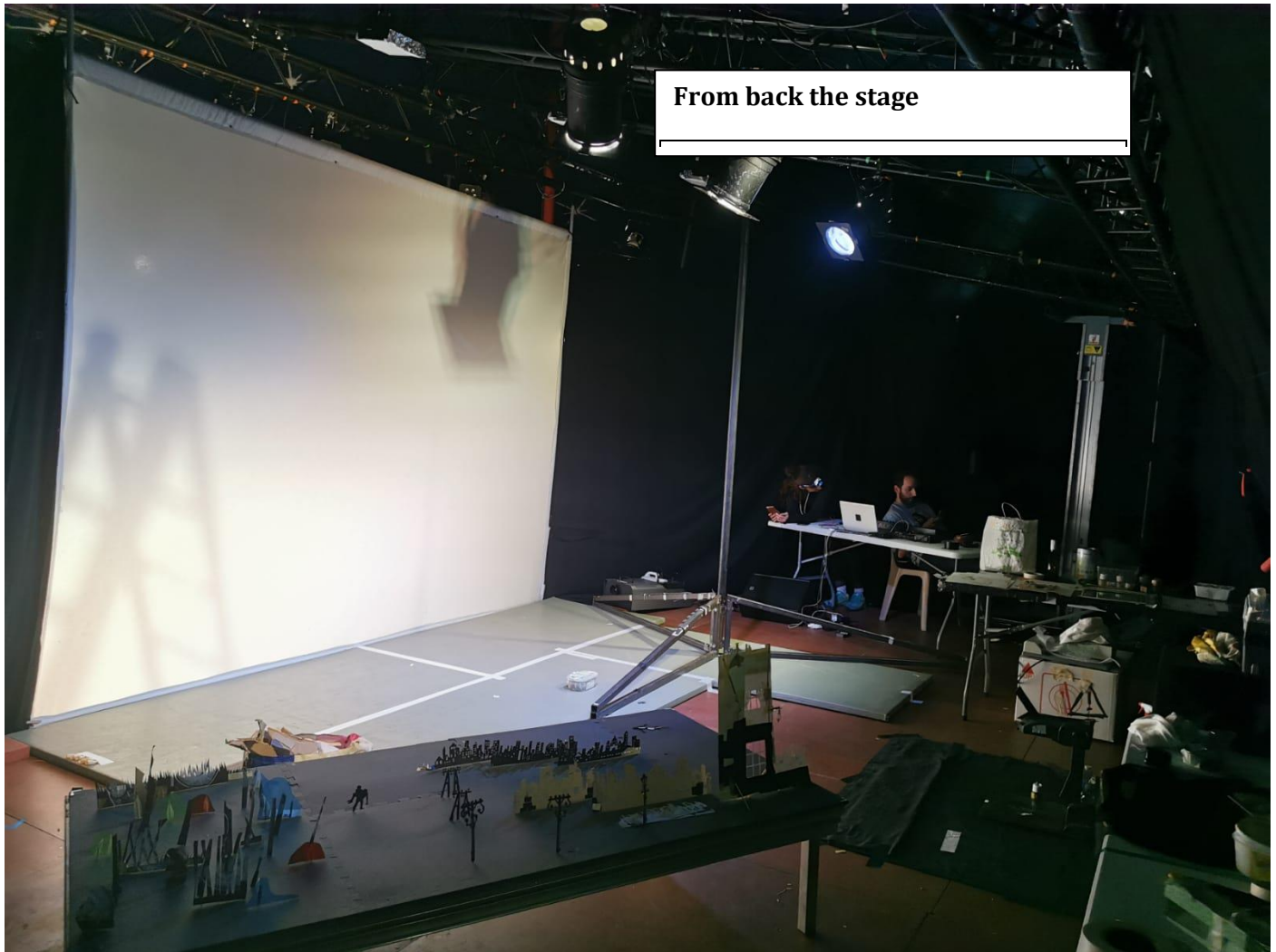
**CONTACT ARNAUD PRECHAC**

**06 28 07 54 70**

[compagnie.zai@gmail.com](mailto:compagnie.zai@gmail.com)



The technical advantage of this show is that it can adapt to the site. According to the place (a little or a big theater, a school or a cultural center, indoor outdoor) the dimension of the show can adapt, by the simple fact of the screen size and because the installation can be autonomous. **The condition outdoor is that the show must be done at night or at the end of the evening outdoors without wind.**



## Staging conditions

Two different formats are possible according with the outdoor place (meters):

- **VERY WIDE STAGE** just in case the theatre could supply a white cyclorama screen: **Width 10m / height 5m50 / depth of the stage required: 10m from the screen to the back of the stage**
- **WIDE STAGE:** screen: **Width 6.5M / height 5m / depth of the stage required: 8m from the screen to the back of the stage**  
Hang area (horizontal fixed poles) for the screen
- **OR SMALL STAGE:** size of the screen: **Width 4Meters / height 3m50 / depth (behind of the stage): 4m50**  
Screen 250g/m<sup>2</sup> – hem upside and downside for the horizontal pole and ballast

# Material supplied by the company

- A large **fabric white screen (6.5M / height 5m)** (FESTIVAL MUST BE SHURE THE STAGE THERE RESPECT THE DIMENSIONS REQUESTED FOR THIS SCREEN)
- **TWO overhead Projectors (250v / 300w)** + + table et props (painting, water, papers, fabrics... etc) (no digital projectors)
- A **computer and some numericals sounds accessories**, connected to a numeric console, and connected to the speakers of the place. (**speakers supplied by the place**)
- **little accessories: painting, paper, plastic, fabric**
- **an autonomous chinese pole**



# Material (supplied by the theater)

## SOUND supplied by theater

- Live sound design. The sound designer is behind the screen on a table with computer numerical piano, and soundcard.
- Two stereo out jack required.
- Foldbacks on stage required !!
- Plug socket 220v (european plug be carefull !)
- One wireless microphone system frees up (if possible !)

## LIGHTS supplied by theater

- NIGHT in the theater is required for the shadows.  
Just a little light for the little spectators
- Two overheads projectors supplied by company - 250 w/400w plug 220V
- Two light effects from the lighting desk directed by the technician of the place :  
Green flash and red flash (at a very moment of the show, 15min required to rehearse befor with him. If nobody can manage it from the lighting desk, a lighting desk must be supplied on stage to the sound designer.  
The 6 leds or PAR are hanged on an horizontal pole 3m behind the screen IN DIRECTION OF THE SCREEN

## POLE AND CURTAINS (supplied by theater !)

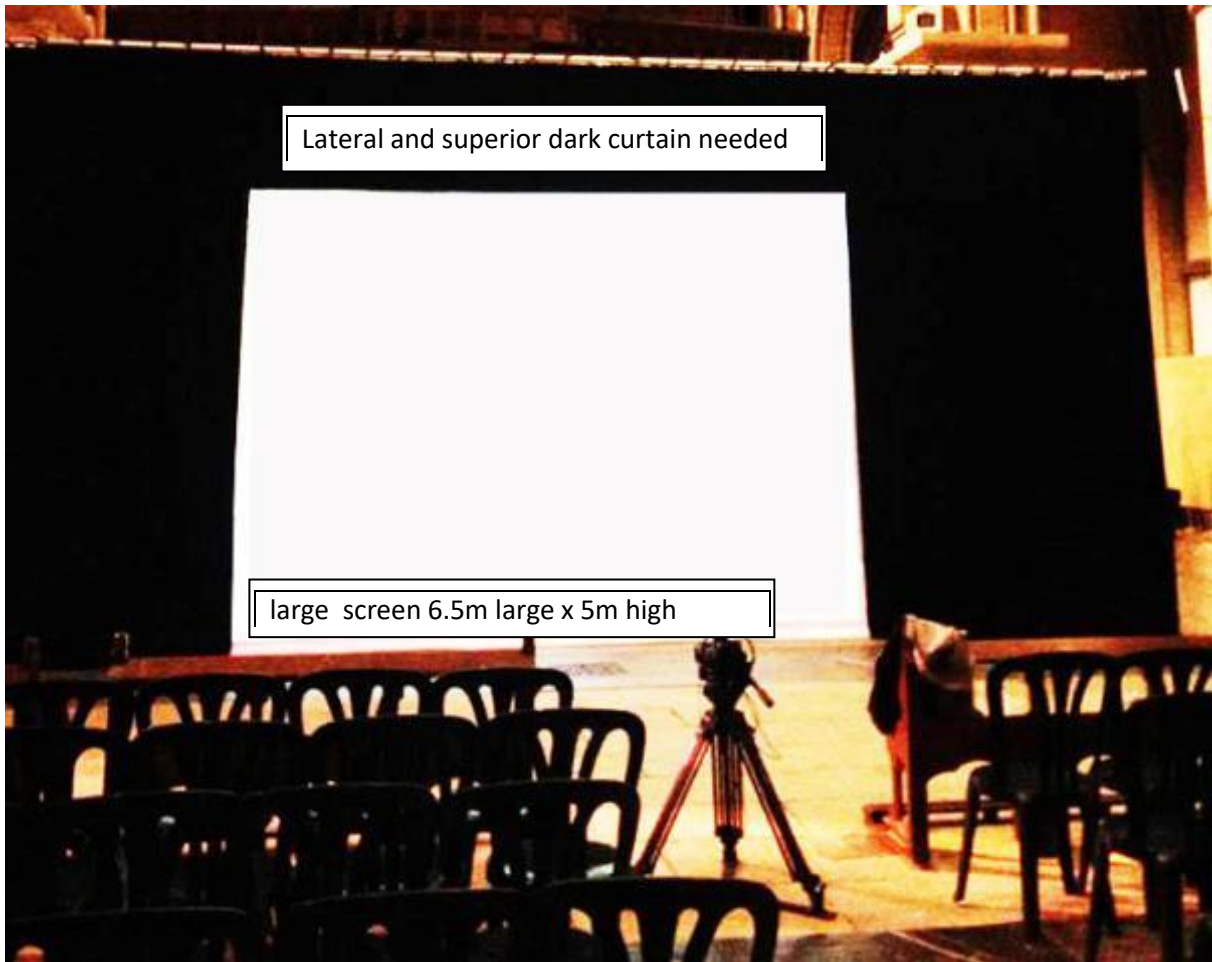
- **Leg drop (theatre dark curtains)** at each side of the fabric and also a curtain above the screen to hide the space between the roof and the screen.
- **An horizontal pole at the top of the stage to hang the screen** if it is inside in a theater,  
**If it is outside we need a two hoists** see fotos bellow. The bridge could be remplced by a pole



Two hoists, MIN : 5.5m high  
ideally 6.5m high

An a bridge MIN : 7.5m wide  
ideally around 8.5 m or more





- Example of a bridge if it is not in a theater (point of view from the stage): two towers each side, and 1 horizontal pole)

## PROPS AND ACCESSORIES (supplied by theater)

- **a stick in plastic or wood** (two meter more or less the design is not important as it is

**Autonomous chinese pole 4 m high**

Three feets 1.5m large



- **little poles** inside the hem of the bottom side of the screen) (2cm to 5cm diameter) see the foto bellow. we have to fin a way to ballast the bottom of the screen) - the screen is 6.5m width.





- a **hazer** 2000W Min if it is more powerful it is just for one effect directed by the technician of the place



- **5 tatami mats**, or similar mats to put behind the screen, (our mats are 2 meters long/1 meter width) it's for the comedien much more comfortable to fall and jump ...



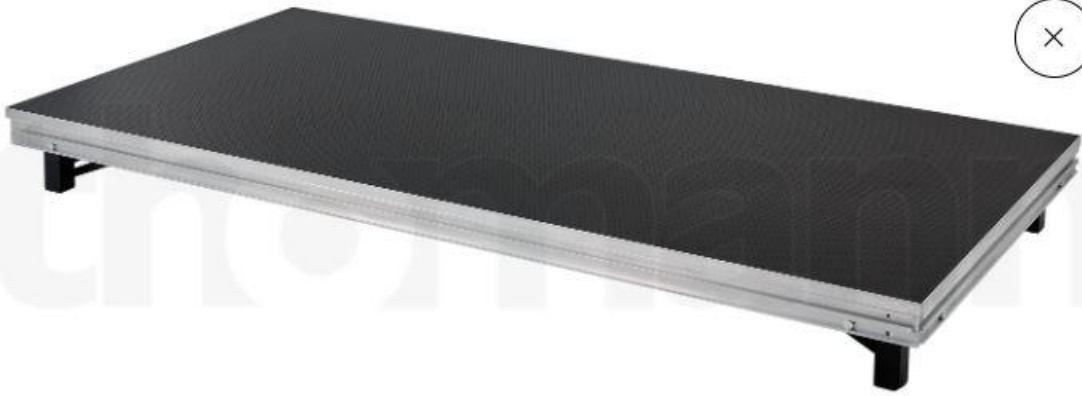
- 1 **stool/or chair** and **3 tables** for the sound designer (not specific characteristics) and for the illustrator
- a **case** or a very **steady table**. It is for the overhead projector. Very necessary to have a steady one. 70-80cm high more or less. 30-50cm width (see the foto bellow)





- **4 or 5 moduable stage**

If we played with the middle screen or the big screen (6m50 by 5m high or 10m larg by 7m high) then we need some modular stage (2m by 1m)



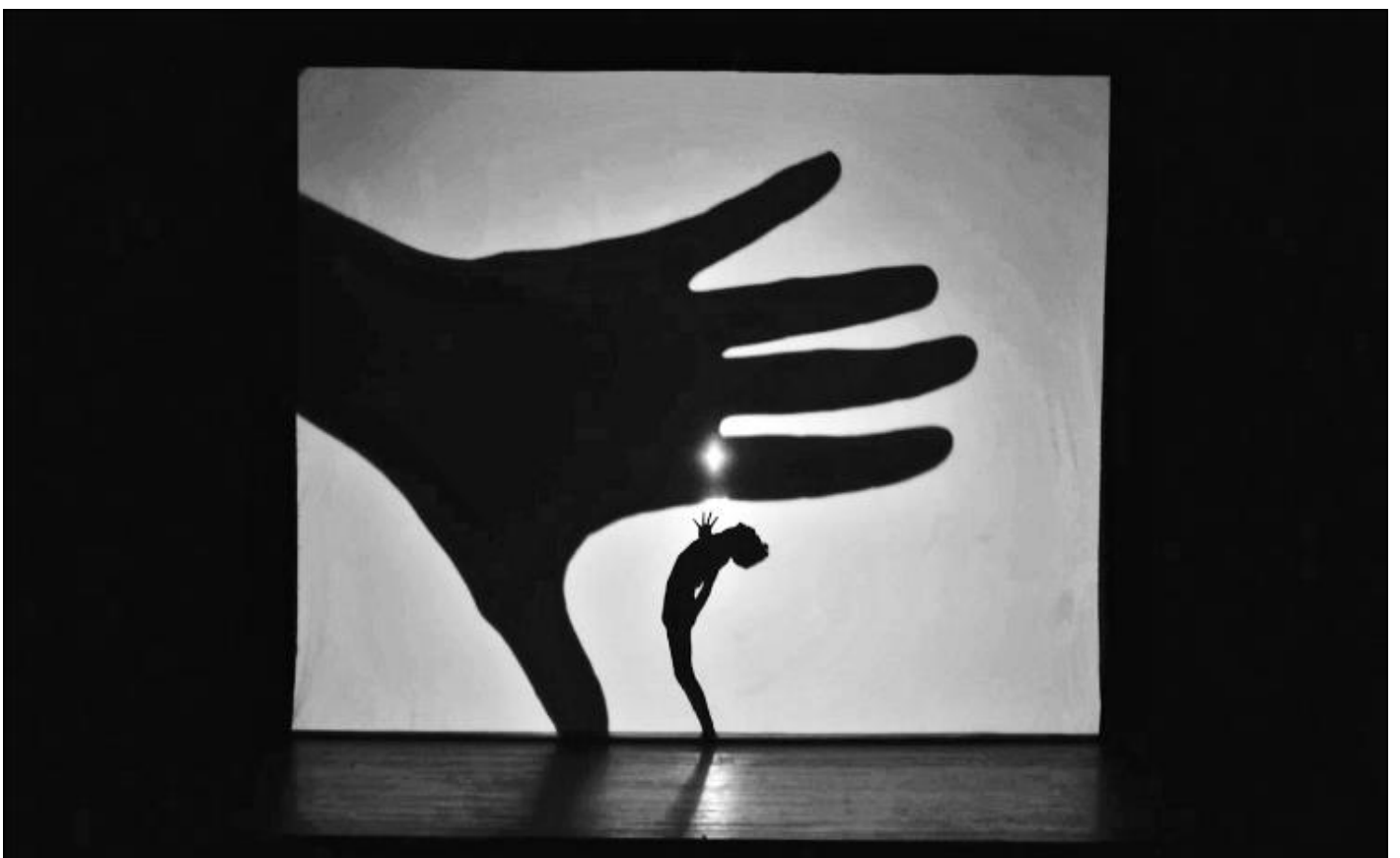


## TO HAVE AN IDEA FROM THE THREE POSSIBLE SCREEN

Cyclorama if theater can supply 10m x 5m



Fabric of the company 6.5mW x 5m H





Fabric of the company 4m W x 3m H

OTHER PHOTOS HERE : [www.compagniezai.jimdo.com](http://www.compagniezai.jimdo.com)